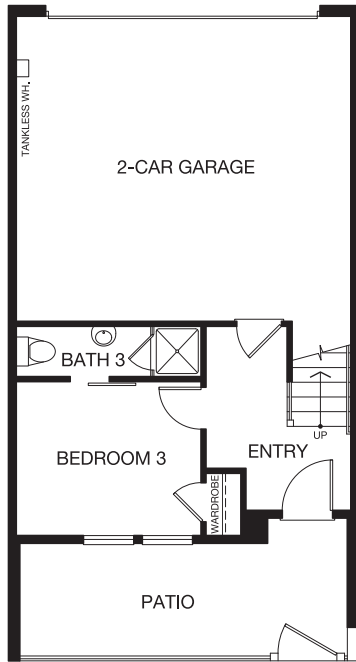


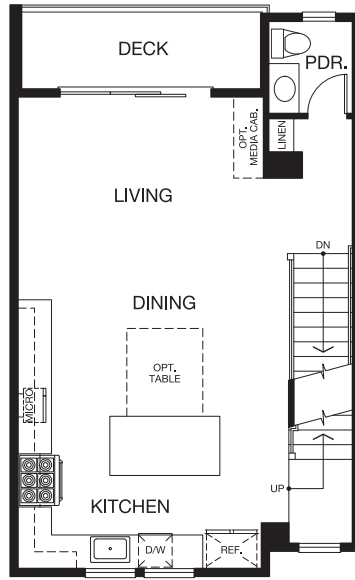


PLAN 1

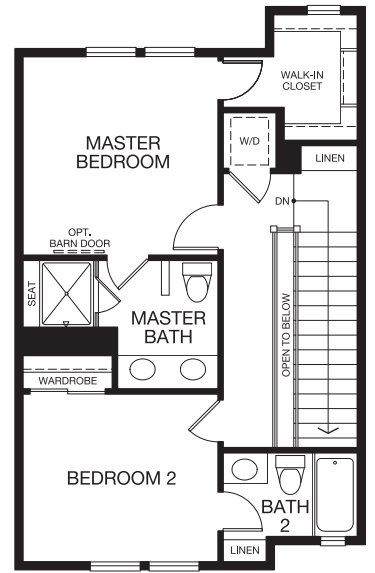
3 Bedroom
3.5 Bath
Approx. 1,473 sq. ft.



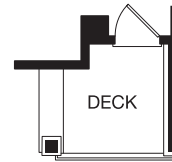
FIRST FLOOR



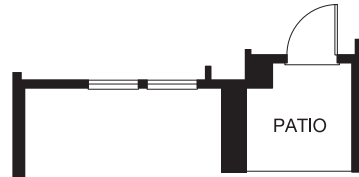
SECOND FLOOR



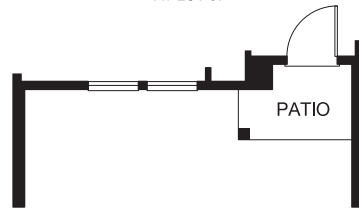
THIRD FLOOR



AT LOTS 49 & 50



AT LOT 37



AT LOTS 49 & 50



SALES CENTER
617 E. Evelyn Ave., Sunnyvale, CA 94086

PrismSunnyvale.com



Floorplans, maps, and elevations pictured are artist's interpretation and are not to scale. In an effort to continually improve our homes, Dividend Homes, Inc. reserves the right to change price, plans, specifications, design and other information without notice or obligation. Windows, decks, and patios may vary by location. All square footages are approximate. © 2019 Dividend Homes, Inc. DRE# 01222956.