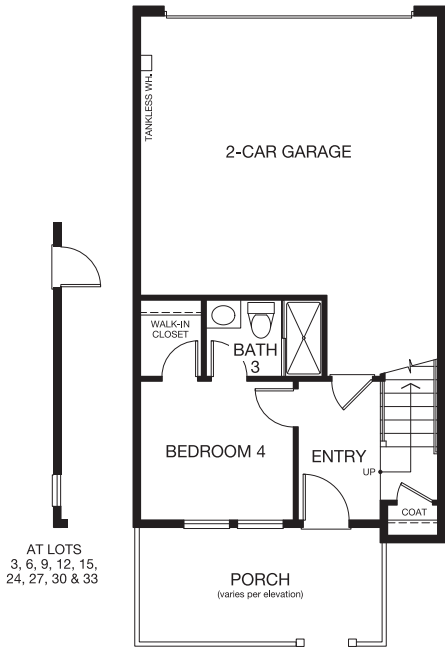


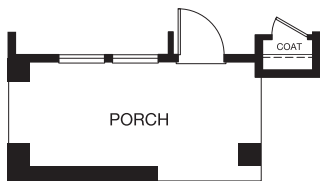


# PLAN 3

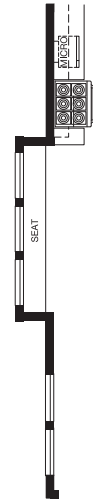
4 Bedroom  
3.5 Bath  
Approx. 1,645-1,651 sq. ft.



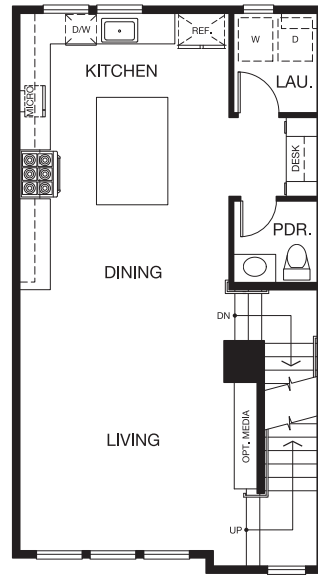
FIRST FLOOR



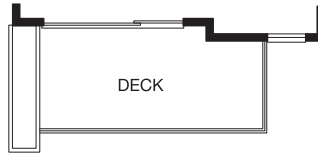
AT LOTS 3, 6, 12, 24 & 30



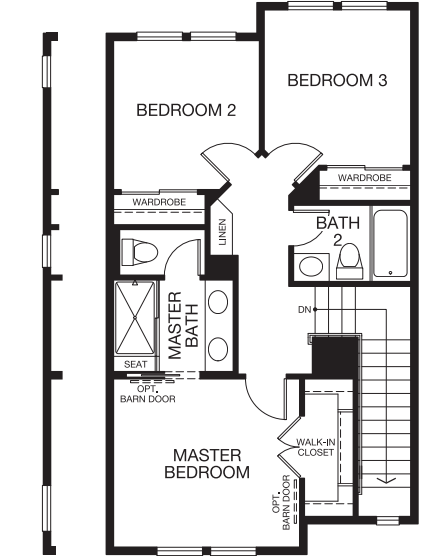
AT LOTS 3, 6, 9, 12, 15, 24, 27, 30 & 33



SECOND FLOOR



AT LOTS 3, 6, 12, 24 & 30



THIRD FLOOR



SALES CENTER

617 E. Evelyn Ave., Sunnyvale, CA 94086

PrismSunnyvale.com

